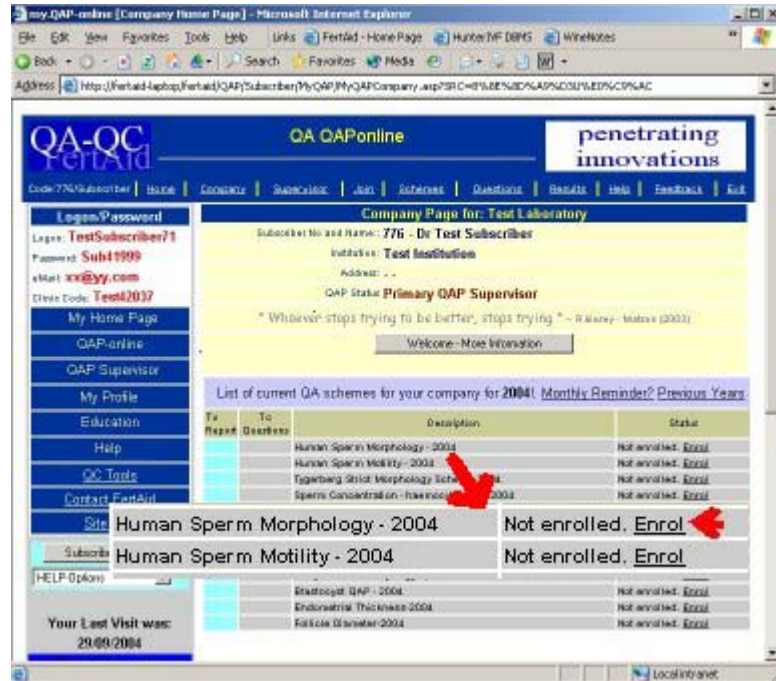


FertAid Subscriptions.

When FertAid has allocated access to the requested schemes, the Company page will now detail those schemes available to ALL members of your group.



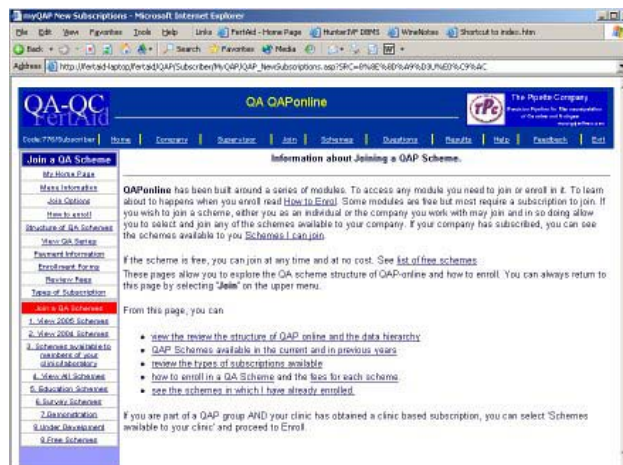
The schemes available on the Company page are only those schemes that require a subscription and your company has paid for the subscription. Other schemes that are free or not in the group requested by your company will not be displayed. To access all other schemes select **JOIN** from the top menu.

Joining a QAP Scheme. There are 2 ways to join a QAP group. Either select from the fast enrollment or Select **JOIN** from the upper menu. The JOIN option allows you to join a variety of free scheme but the Fast Enroll option is applicable only for Company paid subscriptions. Both options will take to the standard 2 step enrollment process.



Free Schemes and Subscription Schemes.

You can enroll in all schemes within QAPonline via **JOIN**. The **Join** Page has several links or two menus -



Select View QA Series to view all scheme by discipline. Additional information on fees, subscription levels and enrollment forms are available from this menu.

Alternatively, the lower menu allows you to view the QAPonline schemes in various formats

select	Series Code	
	HAA	Sperm Morphology - WHO 4th Edition.
	HAB	Sperm Motility.
	HAC	Sperm Morphology-Strict Criteria

Both menus take you to the Series Menu Option. To select the QA series you need, use the icon. When you select the **QA series**, the next page displays all the **QA schemes** within the series folder.


Select	Series Code	Co
	Human Sperm Morphology - 2004	Assess to WHO Standard [4th edition]
\$\$	Andrology - HAA2004 INFO	Current Scheme: Available from 2004
	Human Sperm Morphology - 2003	Assess to WHO Standard [4th edition]
\$\$	Andrology - HAA2003 INFO	Available from 2003
	Human Sperm Morphology - 2002	Assess to WHO Standard [4th edition]
\$\$	Andrology - HAA2002 INFO	Available from 2002

Again, select the icon to enroll in the QAP Scheme of interest. In this way you may enroll in schemes from previous years. The \$\$ sign indicates if the scheme

is free or requires an annual subscription. The alternative way to enroll is the fast select from the companies paid schemes.

	<p align="center">QAPonline Help File</p>	<p align="right">FertAid Pty Ltd PO Box 244 The Junction NSW 2291 Australia T:61-2-49-631226 F:61-2-49631228 office@fertaid.com www.fertaid.com</p>
---	--	--

Company Subscriptions. Select Enroll from the Company Scheme List on the Company Page.



Human Sperm Morphology - 2004	Not enrolled. Enrol 
Human Sperm Motility - 2004	Not enrolled. Enrol

Enrolling in a Company Subscription

Home Company Supervisor Join Schemes Questions Results Help Feedback Exit	
Information about a New Quality Assurance Scheme	
Discipline:	Andrology
Species:	Human
Number:	HAB2004
Name:	Human Sperm Motility - 2004
Group:	Human Clinical Andrology
Comment:	Assess Sperm Motility
Available:	2004
Available:	Subscription required
Subscription:	<input checked="" type="checkbox"/> Your subscription has been paid for by your clinic. You can enroll in this scheme
Description:	Single 16sec video frame of sperm motility available as either avi, mpg or mov files. In some months multiple videos are available. Participants are asked to estimate the % motility and the % progressive motility and submit their estimates for statistical review (Mean and SD). Additional questions ask for clinical interpretation of the video. New DVD quality images against a Makler grid allow for better estimates of progressive motility.
<input type="button" value="Enroll in this scheme!"/>	

Available:	Subscription required
Subscription:	<input checked="" type="checkbox"/> Your subscription has been paid for by your clinic. You can enroll in this scheme
Description:	Single 16sec video frame of sperm motility available as either avi, mpg or mov files. In

The subscription page indicates if the scheme is free, subscription is required or the subscription has been paid by your company. Select 'Enroll in this scheme' to move to the second part of the enrollment process.

Application to Subscribe to a QAP Scheme- Definition of Professional Involvement	
If you wish to subscribe to this QAP-online Scheme, please indicate your level of professional competency in this field. You can then press 'Subscribe Now'. You may indicate the professional society you belong to. When accepted, you will be able to access and participate in the scheme. FertAid-QAP-online welcomes you as a participant and appreciates any comment and suggestion.	
Discipline:	Andrology
Species:	Human
Scheme Number:	HAB2004
Scheme Name:	Human Sperm Motility - 2004
Group Comment:	Human Clinical Andrology
Scheme Comment:	Assess Sperm Motility
Available From:	2004
Available to:	Subscription required
UnitsRequired:	Payment not required- Clinic subscription
 Subscription Status	Professional/Discipline part of my normal working environment <input type="button" value="Select"/> the level of professional involvement in Andrology
 I wish to support	ESHRE SIGA/European Society of Human Reproduction and Embryology <input type="button" value="Select"/> or Add your Society name
<input type="button" value="Subscribe Now"/>	

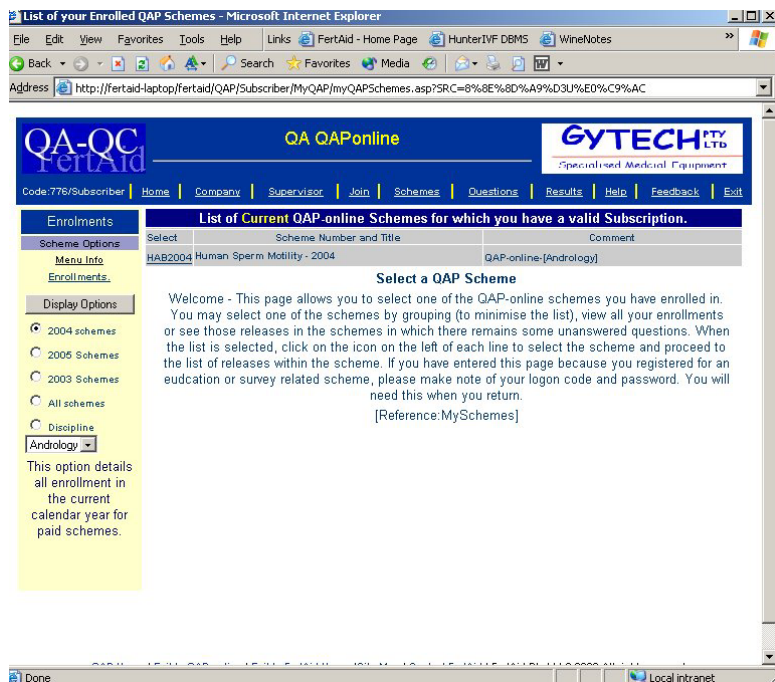
The second page defines your skill level. This is an important definition. QAPonline allows both students and professionals to participate and learn. It is important to appreciate that while students and trainees may participate, their replies are not included in any data summaries. Since this is a scheme linked, it is possible that one participant may be a professional subscription in one scheme but a student in another. QAPonline envisages that new staff appointments may be asked to complete schemes from previous years as a "trainee" to demonstrate competency but their replies will not influence the QA schemes. The

level of skill can be modified by each participant and by the QAP supervisor who is largely responsible for the activity of each staff member.

The professional society is an optional selection. QAPonline has plans for such information the future but at present, it is not an essential component in the enrollment process.

Press Subscribe Now. This completes your enrollment process.

The site now displays all the QA schemes you are registered in for the current year.



You can always return to this page by selecting **Schemes**.

The schemes page displays all the scheme that you have an



enrollment for the period/discipline selected. The default option is the current year but you can review schemes in previous years of all schemes in a discipline. The site will remember your previous selection and use that as the format for each new display of the scheme page.

List of Current QAP-online Schemes for which you have a valid Subscription.		
Select	Scheme Number and Title	Comment
HAB2004	Human Sperm Motility - 2004	QAP-online-[Andrology]

So far so good. You can repeat this process by returning to the company page to complete your enrollment in all the schemes your supervisor requires of you or returning to the Join page and repeating the process.

Scheme Nomenclature.

All QAPonline schemes have a scheme code. The example above has a scheme code HAB2004. As far as possible, each QA series and Scheme follow the same coding. It will attempt to reflect the species (H=Human), the discipline (A=Andrology), the order (A,B,C....) and the year(2004). Some participants find these codes a tad cryptic but that is the structure currently followed.