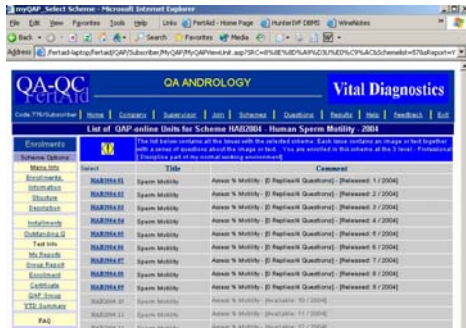


Accessing a QA Scheme.

To access a QA scheme, merely select the scheme code (in the example select HAB2004).



All QA Schemes will use the same or similar format. Access to the Scheme Installment page can be via the **Schemes** option on the top menu or by selecting the scheme code from the list of schemes on the company page.

- Enrolments
- Scheme Options
- Menu Info
- Enrollments
- Information
- Structure
- Description
- Installments
- Outstanding Q
- Test Info
- My Reports
- Group Report
- Enrollment
- Certificate
- QAP Group
- YTD Summary

The Installment page lists all the installments comprising the scheme and a Scheme Option menu. The Scheme Option menu will always be available as your delve deeper into the QA Scheme using a system of cascading menus.

The menu allows you to select another Installment, view the outstanding questions for this scheme, Review the reports for this scheme, modify your enrollment details, print an enrollment certificate and review your QAP group's reports.

Access Month by Month.

The installments page provides considerable information about the scheme. Firstly, you will notice that only those scheme a

List of QAP-online Units for Scheme HAB2004 - Human Sperm Motility - 2004		
Select	Title	Comment
HAB2004.01	Sperm Motility	Assess % Motility - [0 Replies/4 Questions] - [Released: 1 / 2004]
HAB2004.02	Sperm Motility	Assess % Motility - [0 Replies/4 Questions] - [Released: 2 / 2004]
HAB2004.03	Sperm Motility	Assess % Motility - [0 Replies/4 Questions] - [Released: 3 / 2004]
HAB2004.04	Sperm Motility	Assess % Motility - [0 Replies/4 Questions] - [Released: 4 / 2004]
HAB2004.05	Sperm Motility	Assess % Motility - [0 Replies/4 Questions] - [Released: 5 / 2004]
HAB2004.06	Sperm Motility	Assess % Motility - [0 Replies/4 Questions] - [Released: 6 / 2004]
HAB2004.07	Sperm Motility	Assess % Motility - [0 Replies/4 Questions] - [Released: 7 / 2004]
HAB2004.08	Sperm Motility	Assess % Motility - [0 Replies/4 Questions] - [Released: 8 / 2004]
HAB2004.09	Sperm Motility	Assess % Motility - [0 Replies/4 Questions] - [Released: 9 / 2004]
HAB2004.10	Sperm Motility	Assess % Motility - [Available: 10 / 2004]

Select the Installment Code to see the Questions and the answers. You will notice that the summary of the installments lists all the installments in chronological order but only allows selection when the date stamp on the installment is after the current date. The above snapshot was taken in September, 2004. Therefore, all the installments on or before September, 2004 are accessible but those in October will not become available until 1st October. In this way, you will need to return each month to complete the monthly tasks. If however, you have joined QAPonline after the start of the year, you will (unfortunately) be

HelpFile1.doc		Approved by J Stanger
Created by J Stanger on 1/9/2004	Modified 28/9/2004	Version 1.3

	<p align="center">QAPonline Help File</p>	<p align="right"> FertAid Pty Ltd PO Box 244 The Junction NSW 2291 Australia T:61-2-49-631226 F:61-2-49631228 office@fertaid.com www.fertaid.com </p>
---	--	--

able to complete all the tasks to date. This means the QAPonline is not date centric- that is there is no deadline to complete the assessments. Furthermore, the subscription each year will remain valid for the life of QAPonline and new staff will have access to the schemes in previous years to allow for continuity and training and testing for conformity.

The Installments page also describes the number on questions and replies to each installment.

HelpFile1.doc		Approved by J Stanger
Created by J Stanger on 1/9/2004	Modified 28/9/2004	Version 1.3

Questions and Answers..

When you select the Installment, the QUIZ page is opened. You can always return to the Installment Page by selecting **Installments** from the Quiz Menu. The Quiz page details a left options menu and a display of the questions associated with the Installment.

Quiz Options
Quiz Menu Info
Image
Questions
Questions+Image
NEW! Submit Replies
Answers
Add Comment
Review Comments
Assessment Rules
Navigation
Installments

QA-OC FertAid QA ANDROLOGY DAINTREE scientific

Code:776/Subscriber | Home | Company | Supervisor | Join | Schemes | Questions | Results | Help | Feedback | Exit

Code: HAB2004.01 - [Title:Sperm Motility] Image Size=0KB - Released:1/2004
 QAP Comment:"Assess % Motility -"

1.	QHA2009	QAP	Estimate the % motility
2.	QHA2010		Estimate the % spermatozoa with WHO (4th Ed) Grade A motility
3.	QHA2007		Was the quality sufficient to estimate the % motility?
4.	QHA2012		How would define the motility in this sample?

You need to answer one or more questions to review your answers.
 The format for the presentation of QA images and questions has changed to improve navigation. Use the left menu to view the image or list of questions. If there are question that remain unanswered, they should appear in the drop down menu above the image.

Most installments are comprised of an image and a series of questions. One problem with some images is that they consume a large area of the screen. This is OK if you use a larger screen or if you have a fine resolution but in some systems this causes a problem. QAPonline therefore provides several ways to achieve the same outcome. You may view the image on its own, view the questions on their own, view the image and questions together or use the latest option which is an array format where all questions can be answered at the same time. You can add a comment on any set of questions and if your QAP supervisor wishes to define the set of rules the staff should use (say with embryo scoring) then these can be displayed as well. The Navigation option allows one to select from 3 different video formats (avi, mpeg and mov video files).

The list of questions is displayed as below. Note one question, the key assessment question of the series is identified by the **QAP** icon. You may select any question and when answered, the next question on the list will appear.

Code: HAB2004.01 - [Title:Sperm Motility] Image Size=0KB - Released:1/2004
 QAP Comment:"Assess % Motility -"

1.	QHA2009	QAP	Estimate the % motility
2.	QHA2010		Estimate the % spermatozoa with WHO (4th Ed) Grade A motility
3.	QHA2007		Was the quality sufficient to estimate the % motility?
4.	QHA2012		How would define the motility in this sample?

Alternatively, if you select the "Answer all in one page" option, then you will be presented with the following page. Select the '**NEW- Submit Replies**' option.

QA-QC FertAid **QA QAPonline** **DAINTREE scientific**

Code:776/Subscriber | [Home](#) | [Company](#) | [Supervisor](#) | [Join](#) | [Schemes](#) | [Questions](#) | [Results](#) | [Help](#) | [Feedback](#) | [Exit](#)

Quiz Options | **Code: HAB2004.01 - [Title:Sperm Motility]** Image Size=0KB - Released:1/2004

QAP Comment:"Assess % Motility -

QAP Comment:-Assess the motility of the sample as if it was 30 minutes after collection.

Instructions: You may answer any or all questions at the one time. You **MUST** tick the box for each question you wish to submit a reply for. **PLEASE CHECK YOUR REPLIES BEFORE SUBMITTING - THERE IS NO ERROR CHECKING AT THIS STAGE.**

Estimate the % motility : The % motility in this 1 frame is:

Estimate the % spermatozoa with WHO (4th Ed) Grade A motility : % sperm with A grade motility is:

Was the quality sufficient to estimate the % motility? : Yes, I could make an estimate of the % motility

How would define the motility in this sample? : Normal Motility

Check your replies, tick the box and Submit your answers

With this option, you will need to select the box associated with each question to indicate you wish to submit a reply and then enter your answer in the text box OR select from the options in the drop down menu. You do not have to answer all questions at once. Press '**Check your replies, tick the box and Submit your answers**' button.

Estimate the % motility : The % motility in this 1 frame is:

Estimate the % spermatozoa with WHO (4th Ed) Grade A motility : % sperm with A grade motility is:

Was the quality sufficient to estimate the % motility? : Yes, I could make an estimate of the % motility

How would define the motility in this sample? : Normal Motility

Check your replies, tick the box and Submit your answers

If the image is a static jpeg image or an animated GIF file, the image will appear in the top left menu. You can adjust the size of the image by selecting from x 0.5 to x 2 magnifications.



x0.5 x1 x1.5 x2

Code: HEE2004.03-1 - [Title:Single Day 2 Embryo] Image Size=239KB - Released:3/2004

QAP Comment:"Assess as a Day 2 Human Embryo at 44 hr plnsemination -

QAP Comment:This animated image portrays an embryo at 44 hr post insemination [Inseminate at 2.00pm on day 0 and this inspection at 10.00am day 2]. The score for this embryo is calculated from the replies to the other questions listed below. For more information on the embryo score, select Quest Info when viewing the calculation.

Instructions: You may answer any or all questions at the one time. You MUST tick the box for each question you wish to submit a reply for. PLEASE CHECK YOUR REPLIES BEFORE SUBMITTING - THERE IS NO ERROR CHECKING AT THIS STAGE.

- [Quiz Options](#)
- [Quiz Menu Info](#)
- [Image](#)
- [Questions](#)
- [Questions+Image](#)
- NEW!** [Submit Replies](#)
- [Answers](#)
- [Add Comment](#)
- [Review Comments](#)
- [Assessment Rules](#)
- [Navigation](#)
- [Installments](#)

How many cells are in the embryo :	<input type="checkbox"/>	The number of cells are	<input type="text"/>
How even are the size of the blastomeres :	<input type="checkbox"/>	The blastomeres appear of equal size	<input type="text"/>
What is the % fragmentation on this embryo :	<input type="checkbox"/>	The % fragmentation is:	<input type="text"/>
Describe the degree of compaction. :	<input type="checkbox"/>	NO compaction is evident	<input type="text"/>
Is the rate of cleavage normal? :	<input type="checkbox"/>	YES, this embryo is normal.	<input type="text"/>
What is the embryo score for this embryo :	The question cannot be answered from this page.		

Check your replies, tick the box and Submit your answers

QA-QC
FertAid

QA ANDROLOGY

DAINTREE
scientific

Code:776/Subscriber
[Home](#) | [Company](#) | [Supervisor](#) | [Join](#) | [Schemes](#) | [Questions](#) | [Results](#) | [Help](#) | [Feedback](#) | [Exit](#)

- [Quiz Options](#)
- [Quiz Menu Info](#)
- [Image](#)
- [View Video Options](#)
- [Questions](#)
- [Questions+Image](#)
- NEW!** [Submit Replies](#)
- [Answers](#)
- [Add Comment](#)
- [Review Comments](#)
- [Assessment Rules](#)
- [Navigation](#)
- [Installments](#)
- [Enrollments](#)

Code: HAB2004.01 - [Title:Sperm Motility] Image Size=0KB - Released:1/2004

QAP Comment:"Assess % Motility -

1.	QHA2009	QAP	Estimate the % motility
2.	QHA2010		Estimate the % spermatozoa with WHO (4th Ed) Grade A motility
3.	QHA2007		Was the quality sufficient to estimate the % motility?
4.	QHA2012		How would define the motility in this sample?

You need to answer one or more questions to review your answers.

The format for the presentation of QA images and questions has changed to improve navigation. Use the left menu to view the image or list of questions. If there are question that remain unanswered, they should appear in the drop down menu above the image.

Multiple Images.

For most installments, a single image is displayed. However for some schemes, it is

- [Image](#)
- [View Video Options](#)
- [Questions](#)
- [Questions+Image](#)

necessary for more than one image to be available. For instance, in the sperm morphology

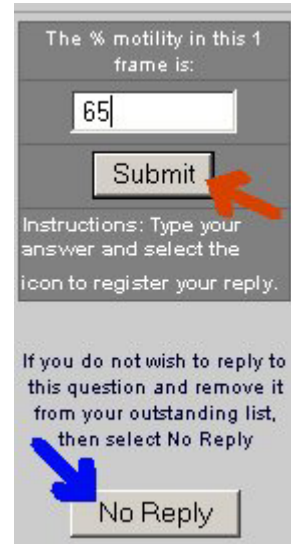
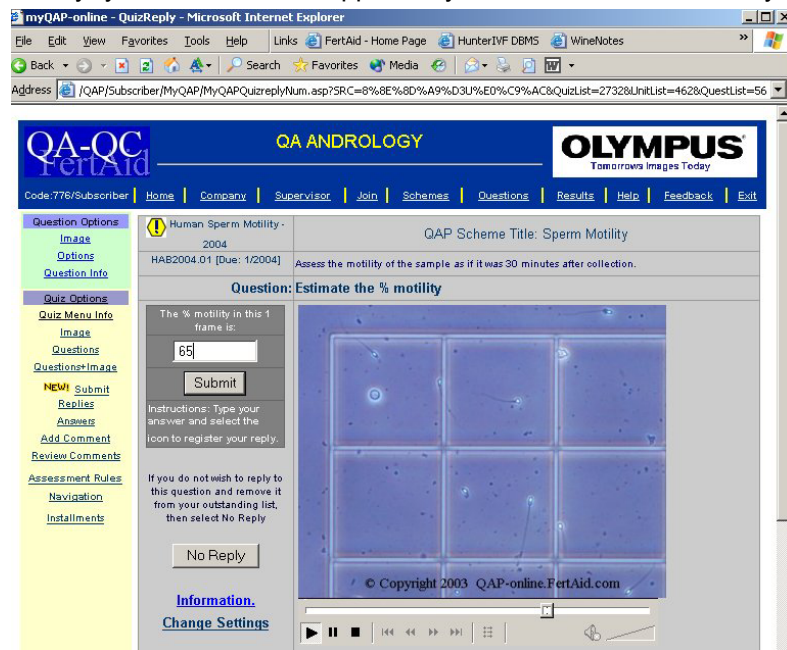
- [Image](#)
- [Open Slide Show](#)
- [Questions](#)

scheme, a series of images allow the counting of more than 200 sperm – the same as panning across a microscope slide. To access these images, you will need to select the 'Open Slide Show' option. Likewise, for the sperm motility scheme, in some installments, more than one video of a motile sperm sample may be available. By selecting 'View Video Options', you can access all the videos and file types available.

HelpFile1.doc		Approved by J Stanger
Created by J Stanger on 1/9/2004	Modified 28/9/2004	Version 1.3

Submitting an Answer.

Finally, you now have the opportunity to submit an answer. All you need to do is to enter the value in the text box and press Submit.



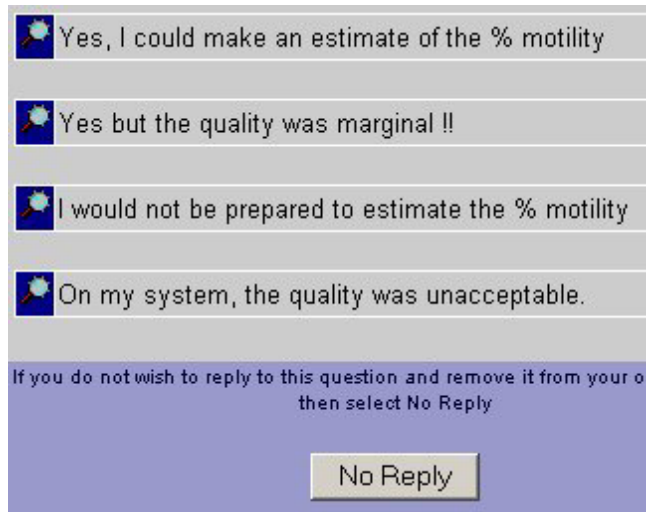
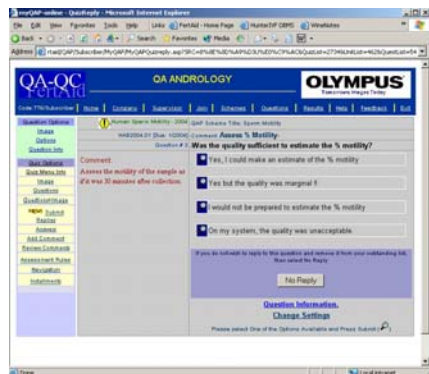
There may be some cases where you do not wish to submit a reply but remove the question from the list of outstanding questions. To do this, press **No Reply**. This will record a null reply.




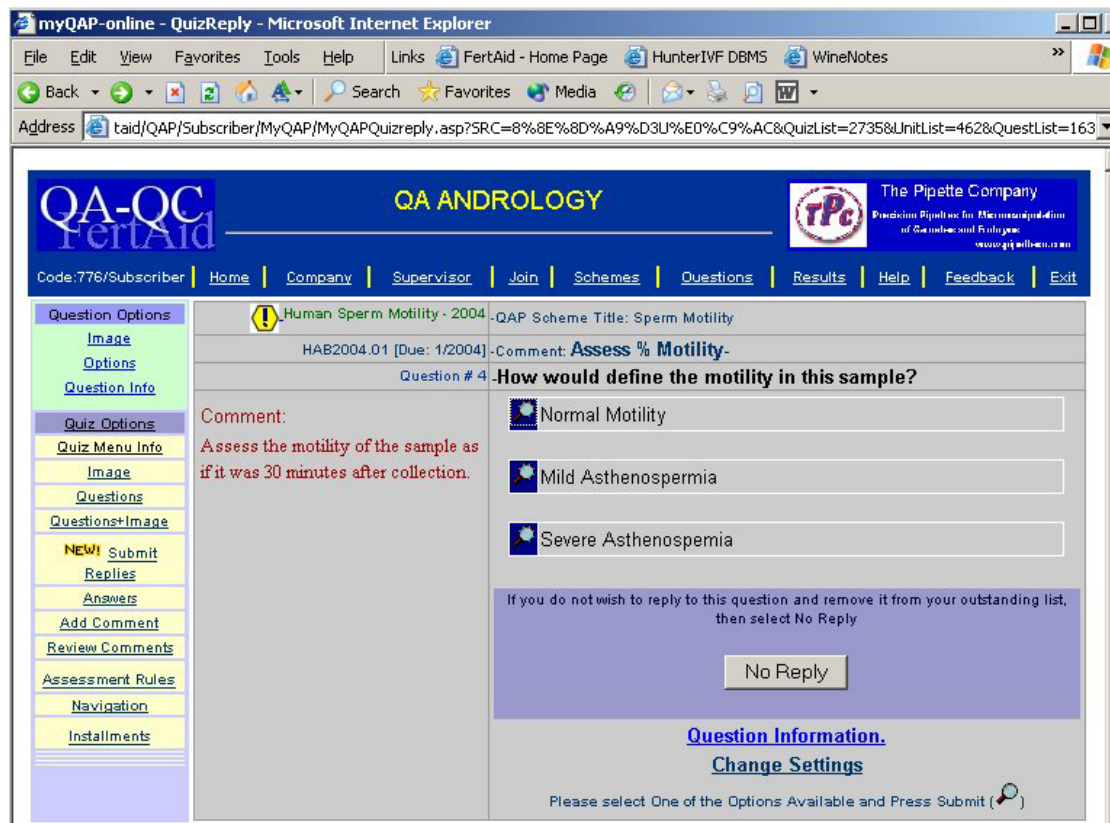
For each question, you can review the image, review the reply options and in some cases, review information associated with the question. This option is a new one and currently a few questions have additional information attached..

Multiple Choice Questions.

While the key QAP questions are always numeric, other questions are optional




In such cases, select the  icon. As before, if you do not wish to reply, select **No Reply**.



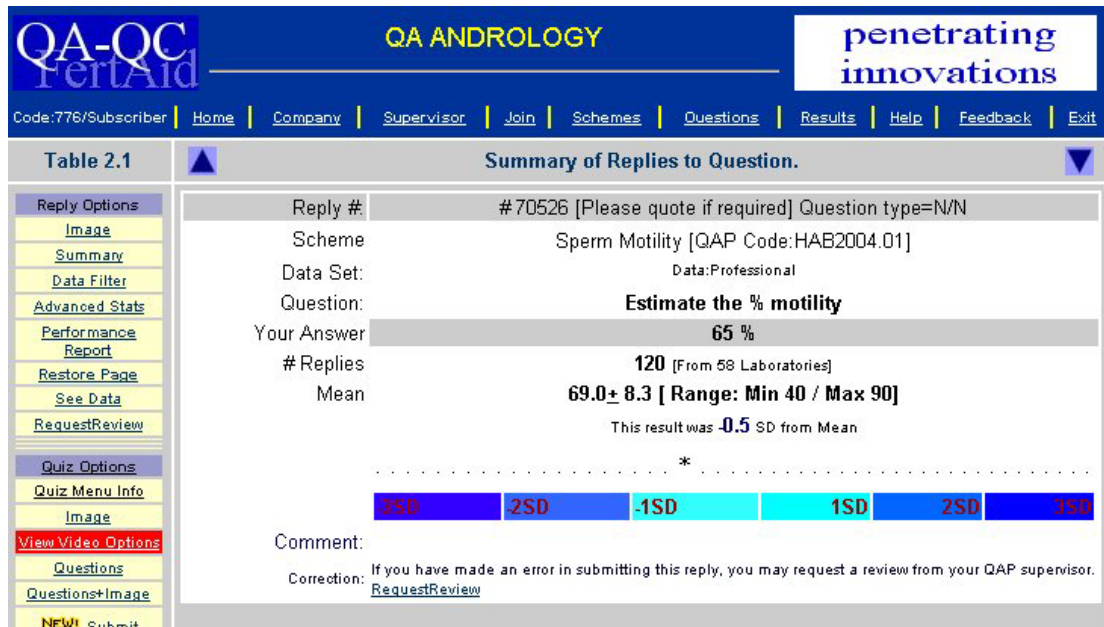
Reviewing your Answers.

After you have submitted your answers, the Quiz page now displays those questions you have answered and your value. Where the answer was an option, the number of similar

1.	QHA2009	 Estimate the % motility - [Your reply : 65]
2.	QHA2010	Estimate the % spermatozoa with WHO (4th Ed) Grade A motility - [Your reply : 55]
3.	QHA2007	Was the quality sufficient to estimate the % motility? - [Your reply : Yes, I could make an estimate of the % motility - 99 / 115]
4.	QHA2012	How would define the motility in this sample? - [Your reply : Normal Motility - 93 / 115]

replies to your reply is given. To view how your reply compares with others, select the Quiz number eg [QHA2009](#).

The site now displays how your answer compares to all others enrolled at a Professional Skills level. The display is for your answer and provides a standard statistical reply of the

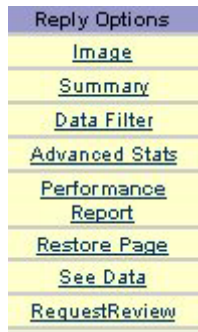


The screenshot shows the website interface for 'QA-QC FertAid' with the title 'QA ANDROLOGY' and 'penetrating innovations'. A navigation menu includes links like Home, Company, Supervisor, Join, Schemes, Questions, Results, Help, Feedback, and Exit. The main content area is titled 'Table 2.1 Summary of Replies to Question.' and displays the following information:

- Reply #: #70526 [Please quote if required] Question type=N/N
- Scheme: Sperm Motility [QAP Code:HAB2004.01]
- Data Set: Data:Professional
- Question: **Estimate the % motility**
- Your Answer: **65 %**
- # Replies: **120** [From 58 Laboratories]
- Mean: **69.0± 8.3 [Range: Min 40 / Max 90]**
- This result was **-0.5** SD from Mean

A horizontal bar chart shows standard deviation units: -3SD, -2SD, -1SD, 1SD, 2SD, 3SD. The user's answer (65%) is positioned between -1SD and 1SD. A comment section includes a correction: 'If you have made an error in submitting this reply, you may request a review from your QAP supervisor. RequestReview'.

mean, standard deviation, Range and the number of SD units your answer was from the group mean. The number of replies and the number of laboratories participating is also stated.



The Reply Option Menu also provides additional features.

- you can review the image.
- Selecting Summary will return you to this page.
- Date Filter – see below
- Advanced Statistics – a graphical representation and outlier removal
- Performance Report - summary of the year to date activity
- See Data - allows a view the data set to export into Excel
- Request Review – if you have made an error in the value you submitted, you can request from your QAP supervisor a correction.

The Data Filter – one of the key features of QAPonline - allows you to alter the data set from



- **Internal QC** - only those members of your QAP group
- **External QC** - all Professional participants.
- **Other Professionals** - in some schemes, a subgroup of invited participants – called the peer review group – is used to provide a more learned group.